

Каталог аксессуаров Z-laser

По вопросам продаж и поддержки обращайтесь:

Алматы (727)345-47-04
Ангарск (3955)60-70-56
Архангельск (8182)63-90-72
Астрахань (8512)99-46-04
Барнаул (3852)73-04-60
Белгород (4722)40-23-64
Благовещенск (4162)22-76-07
Брянск (4832)59-03-52
Владивосток (423)249-28-31
Владикавказ (8672)28-90-48
Владимир (4922)49-43-18
Волгоград (844)278-03-48
Вологда (8172)26-41-59
Воронеж (473)204-51-73
Екатеринбург (343)384-55-89

Иваново (4932)77-34-06
Ижевск (3412)26-03-58
Иркутск (395)279-98-46
Казань (843)206-01-48
Калининград (4012)72-03-81
Калуга (4842)92-23-67
Кемерово (3842)65-04-62
Киров (8332)68-02-04
Коломна (4966)23-41-49
Кострома (4942)77-07-48
Краснодар (861)203-40-90
Красноярск (391)204-63-61
Курск (4712)77-13-04
Курган (3522)50-90-47
Липецк (4742)52-20-81

Магнитогорск (3519)55-03-13
Москва (495)268-04-70
Мурманск (8152)59-64-93
Набережные Челны (8552)20-53-41
Новокузнецк (3843)20-46-81
Ноябрьск (3496)41-32-12
Новосибирск (383)227-86-73
Омск (3812)21-46-40
Орел (4862)44-53-42
Оренбург (3532)37-68-04
Пенза (8412)22-31-16
Петрозаводск (8142)55-98-37
Псков (8112)59-10-37
Пермь (342)205-81-47

Ростов-на-Дону (863)308-18-15
Рязань (4912)46-61-64
Самара (846)206-03-16
Санкт-Петербург (812)309-46-40
Саратов (845)249-38-78
Севастополь (8692)22-31-93
Саранск (8342)22-96-24
Симферополь (3652)67-13-56
Смоленск (4812)29-41-54
Сочи (862)225-72-31
Ставрополь (8652)20-65-13
Сургут (3462)77-98-35
Сыктывкар (8212)25-95-17
Тамбов (4752)50-40-97
Тверь (4822)63-31-35

Тольятти (8482)63-91-07
Томск (3822)98-41-53
Тула (4872)33-79-87
Тюмень (3452)66-21-18
Ульяновск (8422)24-23-59
Улан-Удэ (3012)59-97-51
Уфа (347)229-48-12
Хабаровск (4212)92-98-04
Чебоксары (8352)28-53-07
Челябинск (351)202-03-61
Череповец (8202)49-02-64
Чита (3022)38-34-83
Якутск (4112)23-90-97
Ярославль (4852)69-52-93

Россия +7(495)268-04-70

Казахстан +7(727)345-47-04

Беларусь +(375)257-127-884

Узбекистан +998(71)205-18-59

Киргизия +996(312)96-26-47

эл.почта: zrj@nt-rt.ru || сайт: <https://z-laser.nt-rt.ru/>

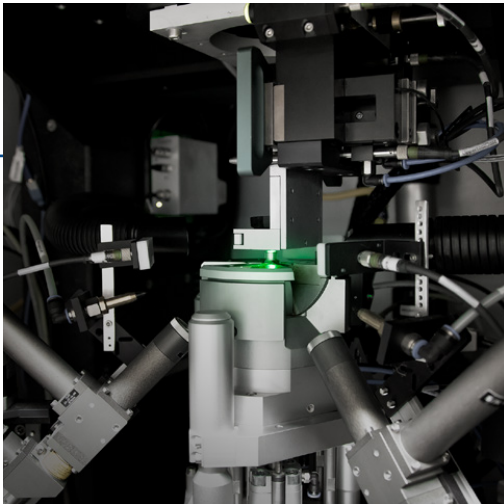
• Alignment of the mounts	4
• Precision mountingen	5
H6 Precision mounting	6
H8 Precision mounting	8
HX, MXYZ Precision mounting	10
• Mountings	12
H0 Mounting (Aluminum)	13
H2 Mounting (Aluminum)	14
H3 Mounting (Plastic)	15
• Adapters for size adjustments	16
Adapters for size adjustments	17
• Mounting brackets	18
BD, BG, BG2	19
• Power supplies	20
WPS, WPSB Power supplies	21
NG-C-W Power supplies	22
Adapter & connector	23
• Cables	24
KB4 Cables	25
KB8g Cables	26
• Optical accessories	27
Caps	28
Optical accessories	29
• About Z-LASER	30

Z-LASER accessories

Precisely.
Reliable.
Durable.

Z-LASER

An Exaktera Company



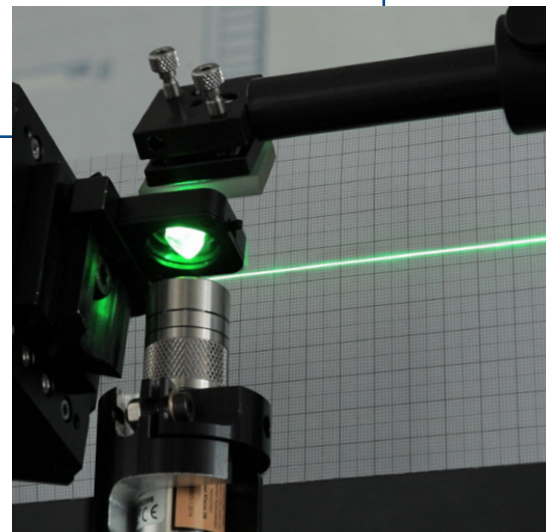
Highest precision since 1985

For more than 35 years we have been manufacturing our laser modules with highest precision, for use in rough industrial environments as well as for sensitive applications in laboratories and medical sectors. The focus is always the precise projection of a sharp laser projection at a defined position.

Perfectly adjusted

In addition to the laser module used, the corresponding accessories are decisive for precise and reliable use. The Z-LASER accessories are developed and manufactured according to the same high standards that we use to manufacture our laser modules.

The perfectly matched components offer impressive results and guarantee a long and carefree use of our laser modules in your application.



Mountings

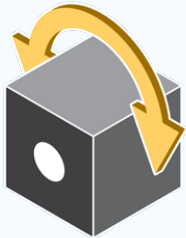
Precision starts with a stable base. Our mounts are more than just a fixture: they are the link between your laser and flawless quality results.

Every axis under control, every project in focus

The precision of your work depends on the alignment of the laser. Thanks to our mounts that allow fine adjustments along each axis, you can count on consistent quality and accuracy on every project. A choice for reliability and perfection.



Alignment of the mounts

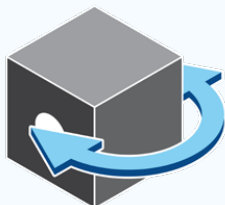


Longitudinal axis

The longitudinal axis is aligned along the mounted laser. The mounting can be adjusted along the longitudinal axis.



1 | Roll



Vertical axis

The mounting allows fine adjustments of the laser around the vertical axis.



3 | Yaw



Transverse axis

The mounting can be adjusted along the transverse axis.



2 | Pitch



4 | Shift

Precision mountingen

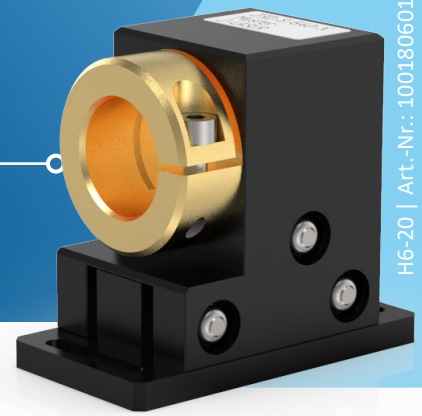


H6 Precision mount.....	6
H8 Precision mount.....	8
HX, MXYZ Precision mount.....	10





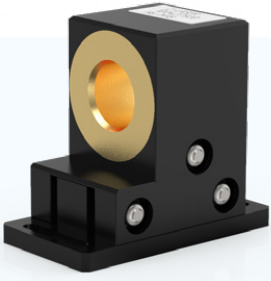



H6

Precision mounting

PräzisionsMountings ermöglichen eine einfache, schnelle und präzise Ausrichtung des Lasers. AluMountings mit stabiler Dehaufnahme aus Messing.



H6-20 | Art.-Nr.: 100180601

	Product name	Assembly	Article code	Product Description	Compatibel with:
	H6-20	 1	100180601	Mounting on a flat surface for laser with $\varnothing 20\text{mm}$ outer diameter	ZAT ZM18 ZX20
		 3			
		 4		Assembly tools included	
	H6-M18	 1	100427500	Mounting on a flat surface for laser with M18 external thread	ZM18 ZX20
		 3			
		 4		Assembly tools included	



1 | Roll



2 | Pitch



3 | Yaw



4 | Shift

Precision mounting H6

For lasers with a Ø20mm or M18 external thread

This aluminum precision mounting is suitable for all laser modules with Ø20mm or M18 threads. The aluminum block housing ensures optimal heat transfer.

- maintenance-free
- self-locking
- For all Ø20mm and M18 lasers



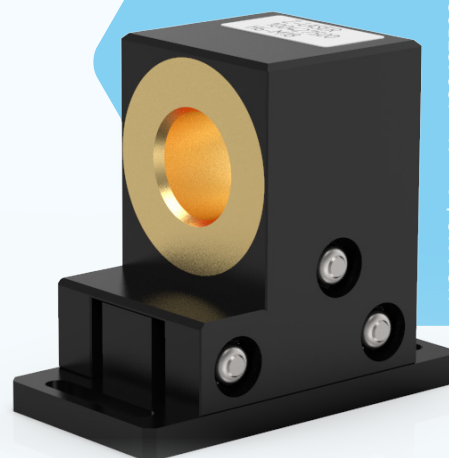
1 | Roll



3 | Yaw



4 | Shift



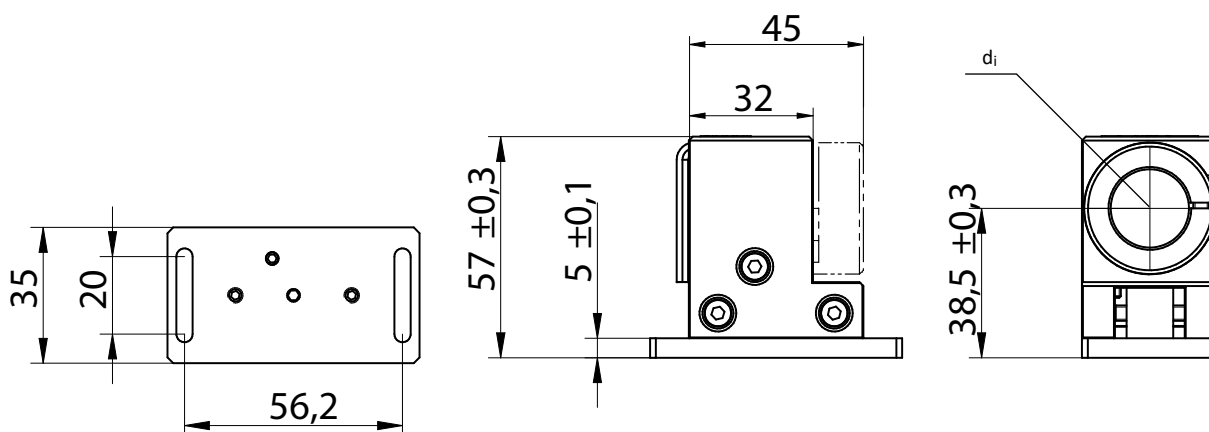
H6-M18 | Art.-Nr.: 100427500

Specifications

	Unit	Inner diameter d _i
H6-M18	-	M18 x 1
H6-20	mm	20 x 1

Technical specifications

	Unit	
Length	mm	65
Wide	mm	35
High	mm	57
Material	-	Anodised aluminum



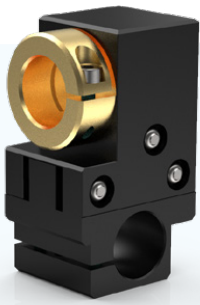








H8

Precision mounting

The aluminum block casing ensures optimal heat transfer.
The stainless steel screw set allows for coaxial rotation, angular rotation, and parallel displacement of the laser module.



H8-M18 | Art.-Nr.: 100451600

	Product name	Assembly	Article code	Product Description	Compatibel with:
	H8-20	 1  2  3  4	100180701	Mounting on Ø20mm shaft for laser with Ø20mm outer diameter Assembly tools included	ZAT ZM18 ZX20
	H8-M18	 1  2  3  4	100451600	Mounting on Ø20mm shaft for laser with M18 external thread Assembly tools included	ZM18 ZX20



1 | Roll



2 | Pitch



3 | Yaw



4 | Shift

Precision mounting H8

For lasers with a $\varnothing 20\text{mm}$ or M18 external thread

This aluminum precision mounting is suitable for all laser modules with $\varnothing 20\text{mm}$ or M18 threads. The aluminum block housing ensures optimal heat transfer.

- maintenance-free
- self-locking
- For all $\varnothing 20\text{mm}$ and ZM18 lasers



1 | Roll



2 | Pitch



3 | Yaw



4 | Shift



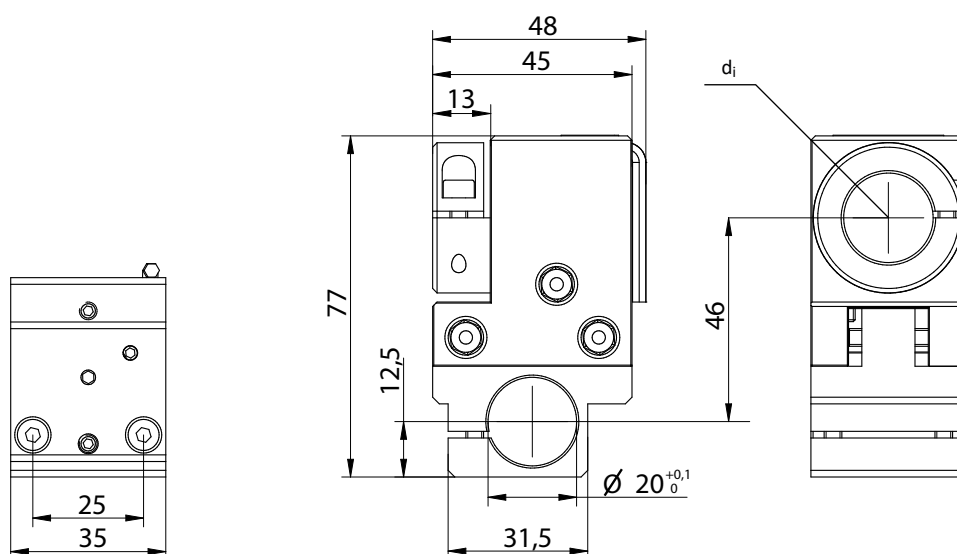
H8-M18 | Art.-Nr.: 100451600

Specifications

	Unit	Inner diameter d_i
H8-20	mm	20
H8-M18	-	M18 x 1

Technical specifications

	Unit	
Length	mm	45
Wide	mm	35
High	mm	77
Material	-	Anodised aluminum



HX & MXYZ Precision mounting

Product name	Assembly	Article code	Product Description	Compatibel with:
--------------	----------	--------------	---------------------	------------------

HX-11-K



HX-11-K

PVC
Precision disc spring holder
for laser with Ø11mm

ZD
ZF-pe-F

Adjustment inbus T10 / wrench: SW5,5



MXYZ-20

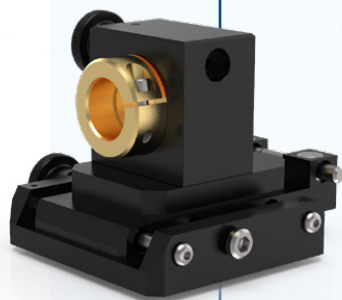


MXYZ-20B

Anodised aluminium
for laser with Ø20mm
yaw by 20°
can be moved parallel to the
transverse axis: 20mm
Adjustment adjusting knob

ZAT
ZM18
ZX20

maintenance-free, backlash-free, self-
locking



MXYZ-M18



MXYZ-M18

Anodised aluminium
for laser with M18 external thread
yaw by 20°
can be moved parallel to the
transverse axis: 20mm
Adjustment inbus: adjusting knob +
T20 (Clamping lasers)

ZM18
ZX20

maintenance-free, backlash-free, self-
locking



Precision mounting MXYZ

For lasers with a Ø20mm or M18 external thread

The precision mount can be adjusted in 3 axes. No tools are required for alignment. The base plate of the precision mount has 4 threaded holes for installation.

- maintenance-free
- self-locking
- For all Ø20mm and M18 lasers



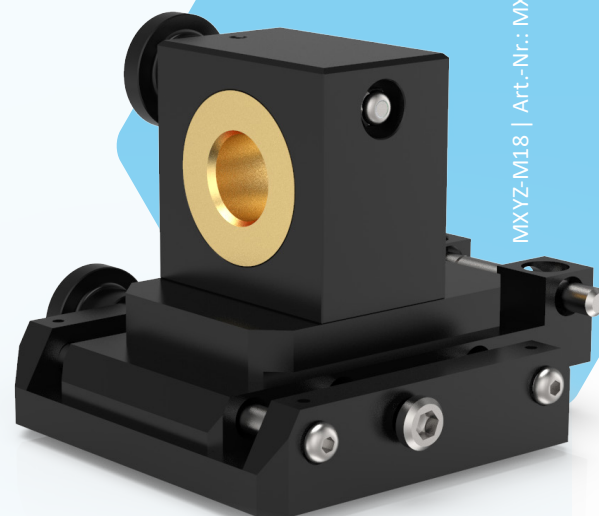
1 | Roll



3 | Yaw



4 | Shift



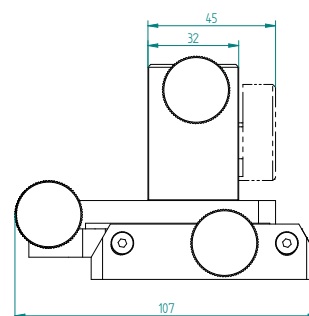
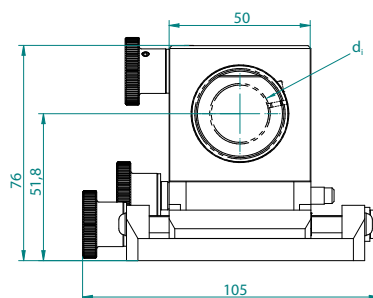
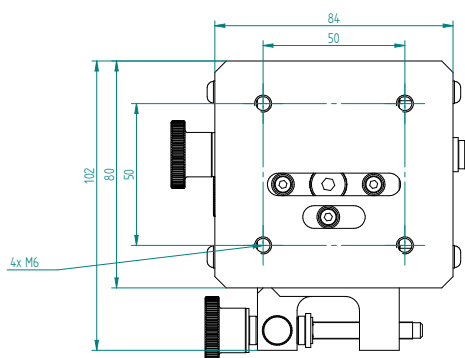
MXYZ-M18 | Art.-Nr.: MXYZ-20B

Specifications

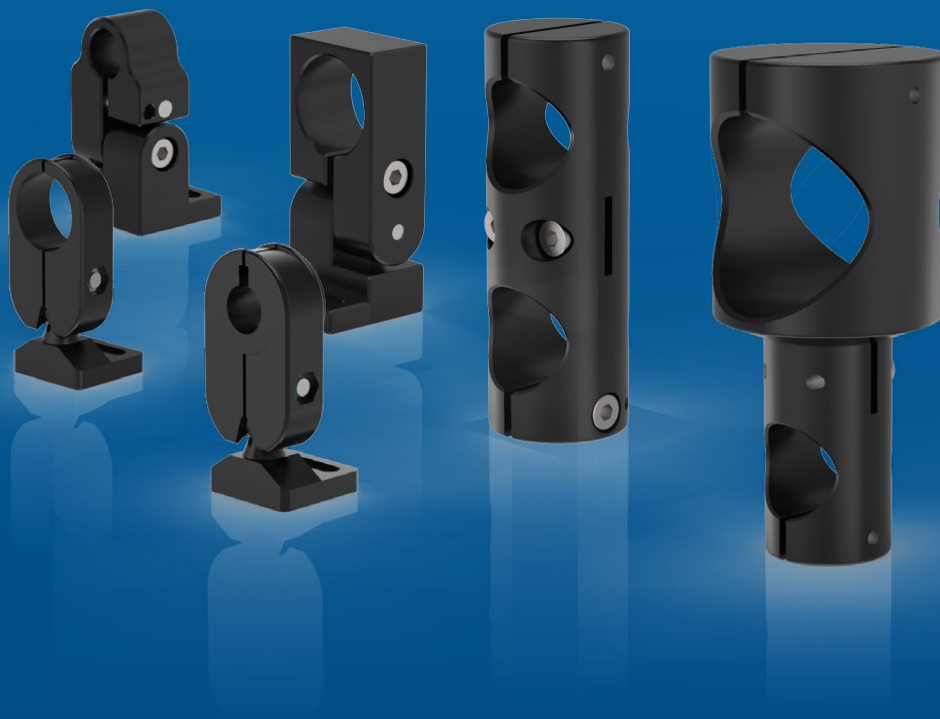
	Unit	Inner diameter d _i
MXYZ-20	mm	20
MXYZ-M18	-	M18 x 1

Technical specifications

	Unit	
Length	mm	107 +/- 0,5
Wide	mm	105 +/- 0,5
High	mm	79 +/- 0,5
Axial angle	°	360
Parallel adjustment	mm	+/- 9
Tilt angle	°	+/- 8
Angle of the positioning accuracy	mrad	0,5
Parallel positioning accuracy	mm	0,1
Positioning accuracy	mrad	0,5
Material	-	Anodised aluminum



Mountings



• H0 Mounting (Aluminum)	13
H2 Mounting (Aluminum)	14
H3 Mounting (Plastic).....	15

H0 Mounting (Aluminum)

The aluminum block casing ensures optimal heat transfer.
The H0-20 mounting can also be adapted to other
diameter lasers by way of adaptors.



H0-40-20 | Art.-Nr.: 100182500

	Product name	Assembly	Article code	Product Description	Compatibel with:
	H0-20-20	 2  3  4	100182200	Anodised aluminium for laser with Ø20mm diameter Mounting on shaft	ZAT ZM18 ZX20
	H0-11-20	 2  3  4	100322100	Combo package for laser with Ø11mm: Mounting: H0-20-20 Adapter: AP-11-0 (Ø11mm) Adjustment inbus: T10 + T20	ZD ZF-pe-F
	H0-40-20	 2  3  4	100182500	Anodised aluminium for laser with Ø40mm Mounting on shaft Adjustment inbus: T10 + T20	ZPT-F ZR ZRG-F



1 | Roll



2 | Pitch



3 | Yaw



4 | Shift

H2

Mounting (Aluminum)

The aluminum mounting can be tilted 60° and is suitable for different laser modules. The aluminum housing ensures optimum heat dissipation.



H2-20 | Art.-Nr.: H2-20

	Product name	Assembly	Article code	Product Description	Compatibel with:
	H2-20	 1  2	H2-20	Anodised aluminium Elongated hole for Attachment to a flat surface for laser with Ø20mm Adjustment inbus: T20 + T2	ZAT ZM18 ZX20
	H2-11M	 1  2	H2-11M	Anodised aluminium Elongated hole for Attachment to a flat surface for laser with Ø11mm better thermal connection Adjustment inbus: T20 + T25	ZD ZF-pe-F
	H2-11	 1  2	H2-11	Anodised aluminium Combo package for laser with Ø11mm: Mounting: H2-20 Adapter: AP-11-0 (Ø11mm) Adjustment inbus: T20 + T25	ZD ZF-pe-F
	H2-40	 1  2	H2-40	Anodised aluminium Attachment to a flat surface for laser with Ø40mm Adjustment inbus: T20 + T25	ZPT-F ZR ZRG-F



1 | Roll



2 | Pitch



3 | Yaw



4 | Shift









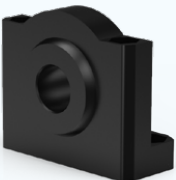



H3

Mounting (Plastic)

The plastic mount with ball head for various laser modules can be tilted and rotated by up to 180°.



H3-20 | Art.-Nr.: H3-20

	Product name	Assembly	Article code	Product Description	Compatibel with:
	H3-20	 1  2  3	H3-20	plastic spherical head Attachment to a flat surface for laser with Ø20mm Adjustment inbus: T20	ZAT ZM18 ZX20
	H3-11	 1  2  3	H3-11	Combo package for laser with Ø11mm: Mounting: H3-20 Adapter: AP-11 (Ø11mm) Adjustment inbus: T20	ZD ZF-pe-F
	H3-M18	 1  2  3	H3-M18	plastic Attachment to a flat surface ball joint for laser with M18 external thread Adjustment inbus: T20	ZM18 ZX20



1 | Roll



2 | Pitch

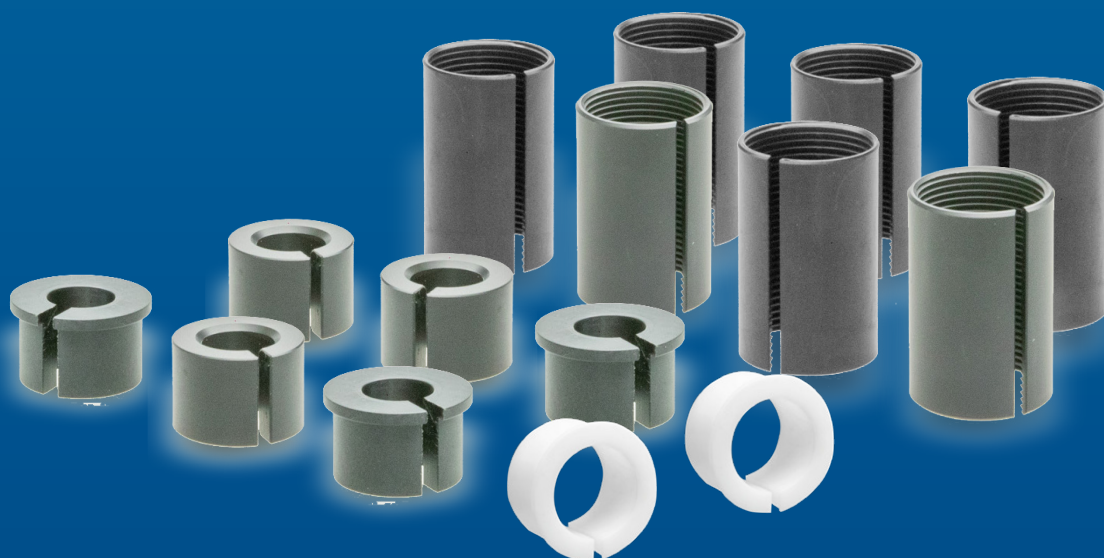


3 | Yaw



4 | Shift

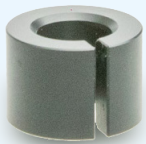
Reducer sleeves



• Reducer sleeves.....	17
------------------------	----

Reducer sleeves

Product name Assembly Article code Product Description Compatibel with:

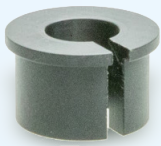


AP-11-0

100248700

for Mountings
von Ø20mm auf Ø11mm

H0
H6
H8



AP-11

AP11

for Mountings
von Ø20mm auf Ø11mm
with Attachment flange

H2
H3



AP-40

AP40

for Mountings
von ø55mm auf ø40mm
with Attachment flange

ZPT-F
ZR
ZRG-F

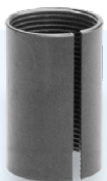


AP-M18-20

100568102

Thread Adapter for Mounting Ø20mm
from M18 thread to Ø20mm

ZM18
ZX20



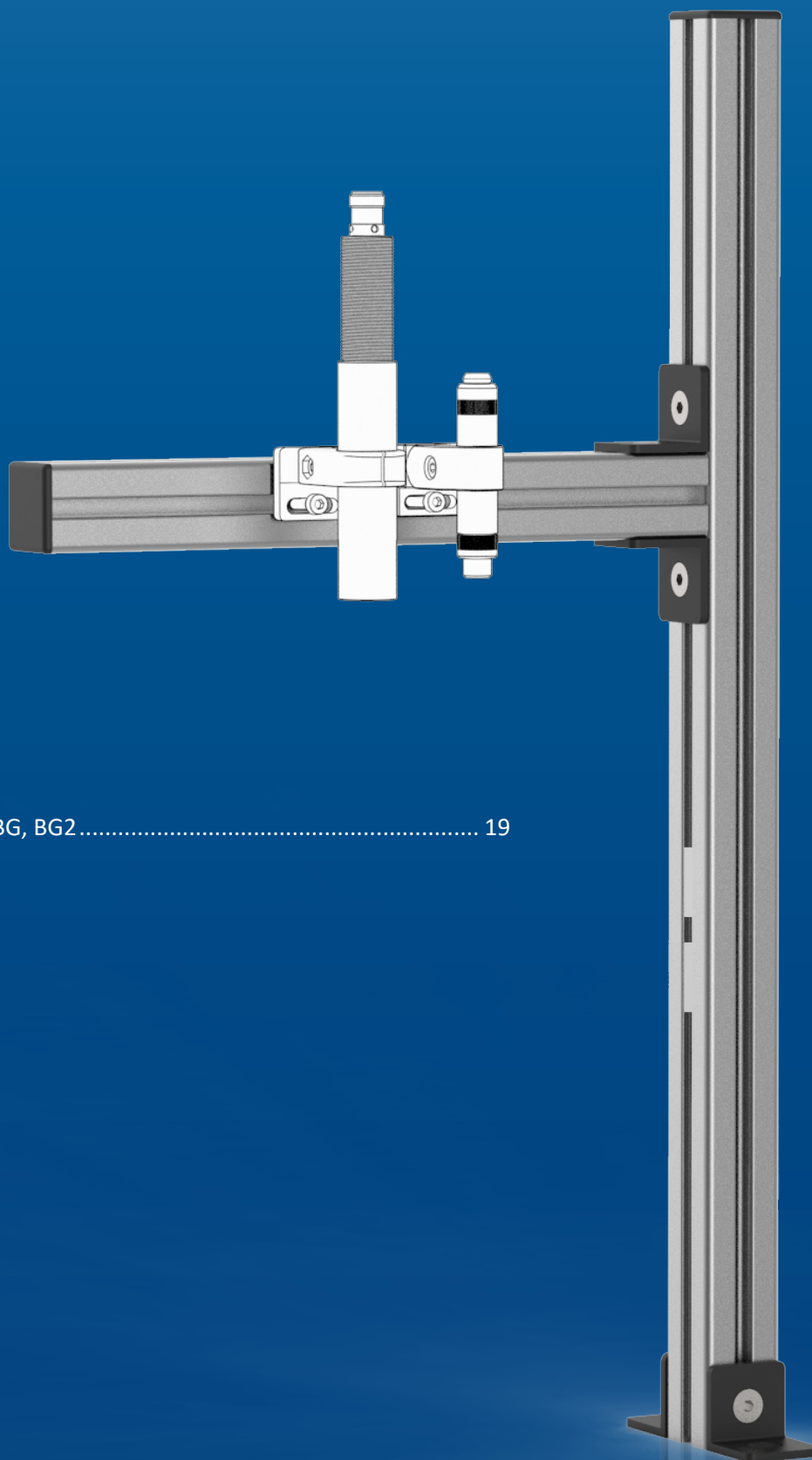
AP-M18-19

100568150

Thread Adapter for Mounting Ø19mm
from M18 thread to Ø19mm

ZM18
ZX20

Mounting brackets



- BD, BG, BG2 19

Mounting brackets

Product name Assembly Article code Product Description Compatibel with:

Wall and ceiling Mounting

BD

Wall and ceiling Mounting

H0-40-20
H0-20-20

Consisting of:
ceiling flange (aluminium)
aluminium tube (Ø40mm x 1.000mm)
stainless steel crossbar (Ø20mm x 500mm)
connecting element

Mounting system

BG

Consisting of:
2 aluminium profiles
(500mm x 30mm x 30mm / 250mm x 30mm x 30mm)
Attachment material

H2
H3

Mounting system 2

BG2

Consisting of:
2 aluminium profiles
(500mm x 30mm x 30mm / 250mm x 30mm x 30mm)
Attachment material
Table clamp

H2
H3

Power supplies



- WPS, WPSB Power supplies..... 21
- NG-C-W Power supplies 22
- Adapter & circular connector 23

Power supplies

	Product name	Assembly	Article code	Product Description	Compatibel with:
	Power supply with M12 circular connector		WPS-9-M12.2	M12 circular connector 9VDC output voltage with Europe and US/Japan plugs	ZM18 ZX20
	Power supply with M12 circular connector		WPS-24-M12-65W	Wide range power supply M12 circular connector 24 VDC output voltage	ZQ1
	Power supply with Texas socket		WPSB-5.0	Texas socket 5VDC output voltage with Europe and US/Japan plugs	ZD ZF-pe-F
	Power supply with 4 Texas sockets		WPSB-5.0-4S	4 Texas socket 5VDC output voltage with Europe and US/Japan plugs	ZD ZF-pe-F

Power supplies

Product name Assembly Article code Product Description Compatibel with:



battery-Pack 18V

100453110

Battery pack included 18V output voltage
(2 batteries type E-Block 9V)
with M12 connector

ZM18
ZX20



NG-C-W-24M

100368500

for top hat rail
24VDC output voltage

ZD-24
ZM18
ZFSM
ZX
ZQ1



NG-C-W-5M

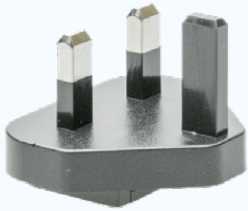
100368400

for top hat rail
5VDC output voltage

ZD
ZM18

Adapter & circular connector

Product name Assembly Article code Product Description Compatibel with:



Plug Adapter UK

100247510

for power supplies WPS
specifically for Great Britain

WPS
WPSB



Plug Adapter AU

100247530

for power supplies WPS
specifically for Australia

WPS
WPSB



circular connector

Z24straight

4-pins
(female) M12
with screw cap
straight

ZM18
ZX20



circular connector

Z24WINKEL

4-pins
(female) M12
with screw cap
angled

ZM18
ZX20

Cables



- KB4 Cables..... 25
- KB5 Cables..... 25
- KB8g Cables..... 26

	Product name	Assembly	Article code	Product Description	Compatibel with:
	KB4-2m		100499400	2m Connection cable with screw cap straight, 4-wire	ZM18 Z-Fiber
	KB4-5m		100499300	5m Connection cable with screw cap straight, 4-wire	ZM18 Z-Fiber
	KB4w-2m		100499420	2m Connection cable with screw cap angled, 4-wire	ZM18 Z-Fiber
	KB4g-5m		100499302	5m Connection cable shielded (shielding not applied) with screw cap straight, 4-wire	ZM18 Z-Fiber
	KB4g-10m		100499452	10m Connection cable shielded (shielding not applied) with screw cap straight, 4-wire	ZM18 Z-Fiber
	KB4g-25m		100499307	25m Connection cable shielded (shielding not applied) with screw cap straight, 4-wire	ZM18 Z-Fiber
	KB5g-2m		100499491	2m Connection cable shielded (shielding not applied) with screw cap straight, 5-wire	ZX ZQ1
	KB5g-5m		100499325	10m Connection cable shielded (shielding not applied) with screw cap straight, 5-wire	ZX ZQ1
	KB5g-10m		100499453	5m Connection cable shielded (shielding not applied) with screw cap straight, 5-wire	ZX ZQ1
	KB5g-25m		100499308	25m Connection cable shielded (shielding not applied) with screw cap straight, 5-wire	ZX ZQ1
	KB5w-5m		100499326	5m Connection cable shielded (shielding not applied) with screw cap angled, 5-wire	ZX ZQ1



Product name Assembly Article code Product Description Compatibel with:



KB8g-2m		100499496	2m Connection cable shielded (shielding not applied) with screw cap straight, 8-wire	ZQ1
KB8g-5m		100499335	5m Connection cable shielded (shielding not applied) with screw cap straight, 8-wire	ZQ1
KB8g-10m		100499454	10m Connection cable shielded (shielding not applied) with screw cap straight, 8-wire	ZQ1



extension cable 2m	VKABEL2M	extension cable Texas 2m	ZD ZF-pe-F
--------------------	----------	-----------------------------	---------------

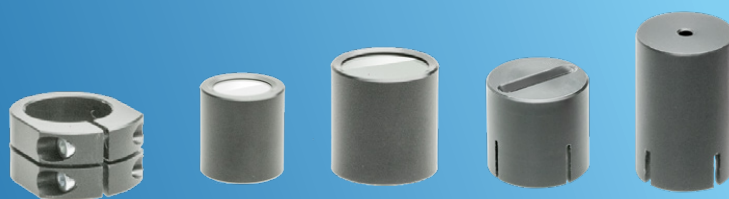
Optical accessories



• Caps	28
Optical accessories	29

Optical accessories

	Product name	Assembly	Article code	Product Description	Compatibel with:
	Dimming cap		AK20	Dimming cap for reducing the lasers line // not suitable for laser with Powell lenses //	lasers with Ø20mm
	Dimming cap bevelled		100620600	Dimming cap bevelled for reducing the lasers line // not suitable for laser with Powell lenses //	lasers with Ø20mm
	Line limiter Attachment LB20		100525702	for reducing line length of approx. 11° to 84° fan angle // not suitable for laser with Powell lenses //	lasers with Ø20mm
	Line limiter Attachment LB11		LB11	for reducing line length fan angle: 10 to 34°	lasers with Ø11mm
	Protective cap IP67 with glass insert		100666600	Protective cap SK20 IP67 with glass insert water- and dustproof	lasers with Ø20mm
	ZM18 cap		100507500	for M18 lasers with 400-700nm Wavelength with anti-reflective glass pane // Spare part //	ZM18
	ZX20 cap		101078001	for ZX20 lasers with 400-700nm Wavelength with anti-reflective glass pane // Spare part //	ZX20
	Focus locking ring		100637700	Used to lock the focus ring	ZM18 ZX20



Laser targeting goggles

Laser target glasses for better visibility of laser projections on light and dark surfaces.



NOT suitable as laser safety goggles!



	Product name	Assembly	Article code	Product Description	Compatibel with:
	LZB red		LZB	Lasers targeting goggles for red lasers	all lasers
	LZB green		LZB green	Lasers targeting goggles for green lasers	all lasers

About Z-LASER

“Innovative light for better results.
This is Z-LASER’s promise and obligation.”



Innovations from the Black Forest

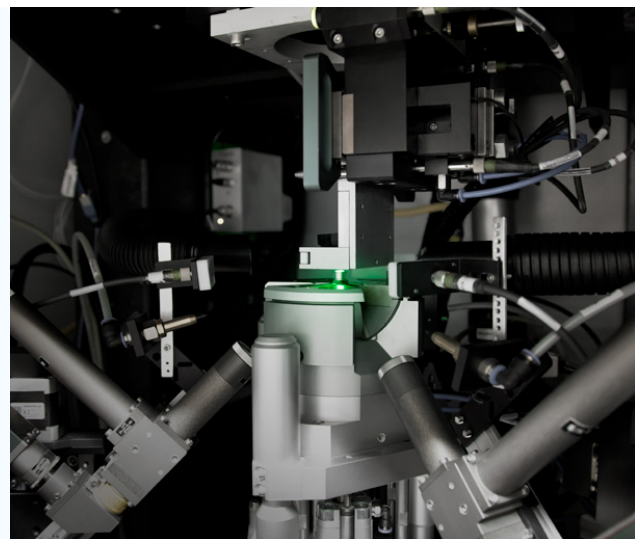
Located in the heart of the Black Forest in Freiburg, Germany, Z-LASER has been **developing and producing innovative, high-quality laser solutions since 1985.**

By providing visual guidance and orientation for people as well as machines, our lasers contribute to optimizing your production processes, ensuring quality, and to using resources carefully. Z-LASER’s product range includes lasers for positioning, lasers for machine vision, laser projectors, and OEM laser systems. The **positioning lasers** acute, visually distinct laser lines enable precise alignment and

positioning on virtually any surface. **Lasers for machine vision**, in combination with a smart camera, capture the spatial contours of moving and non-moving objects to automate optical quality control and much more. **Laser projectors** are an optical guidance aid for people and machines, projecting variable patterns and guidance lines for step-by-step assembly processes. And **OEM laser systems** are manufactured according to your specific, individual requirements.

Z-LASER at a Glance

- Laser innovations from Germany since 1985
- Lasers for positioning, lasers for machine vision, laser projectors
- More than 75,000 products sold annually
- A worldwide network with over 120 employees and more than 60 trading partners
- Part of the Exaktera holding company specializing in laser technologies



Locally Rooted, Globally Present

The Black Forest in the southwest of Germany is an economic region rich in tradition. People here are proud of their inventive spirit, tenacity, their knack for technology, and sense of precision. So, it's no wonder that countless world market leaders and hidden champions are based here.



Versatile Application, Trusting Cooperation

The combination of customer focus and our passion for technology has shaped our continued success. It's not surprising that, over the decades, Z-LASER has been readily chosen by countless industries.

From wood processing and electronics manufacturing to textile and paper production, to the automotive and building materials industries – laser innovations from Freiburg are used wherever reliable precision and efficient high-performance processes are called for.



We get to the point...

... because we know that company presentations don't necessarily belong in the blockbuster category. And you certainly don't have that much time either. That's why we've condensed our 35 years of laser history into a crisp 17 pages. And instead of talking about us, we'd rather let our innovations do the talking. For all other questions, we are of course always there for you.

[~ 5MB pdf]
company presentation



Z-LASER

An Exaktera Company

Innovative light for better results

Providing visual guidance to people and machines with laser solutions

Z-LASER has been developing and producing innovative, high-quality laser solutions since 1985.

By providing visual guidance and orientation for people as well as machines, our lasers contribute to optimizing your production processes, ensuring quality, and to using resources carefully.



German engineering since 1985

Over 120 employees develop and manufacture completely in Freiburg, Germany.



Innovators by conviction

25 % of our workforce is involved in R&D.



Rooted locally, at home globally

Sales offices and over 60 distributors worldwide.



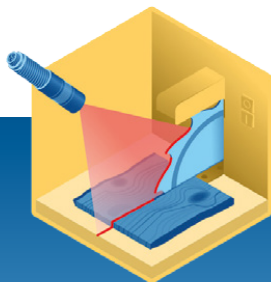
The right solution for every challenge

Developed in close customer exchange, our products adapt perfectly to your requirements.



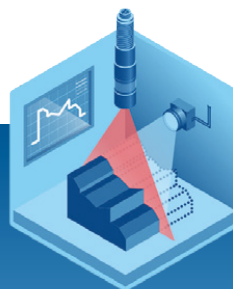
Modular products for efficient processes

Modularity means less maintenance, optimized performance and better scalability.



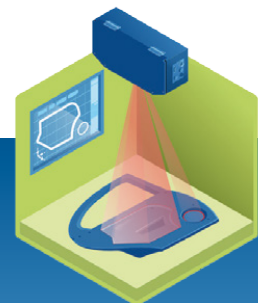
Positioning Laser

Benefit from increased precision for more efficient processes with lower material consumption.



Laser for Machine Vision

Automate your optical quality control with structured laser light.



Laser Projectors

Replace mechanical templates with laser projections and save time, money and material.

По вопросам продаж и поддержки обращайтесь:

Алматы (727)345-47-04
Ангарск (3955)60-70-56
Архангельск (8182)63-90-72
Астрахань (8512)99-46-04
Барнаул (3852)73-04-60
Белгород (4722)40-23-64
Благовещенск (4162)22-76-07
Брянск (4832)59-03-52
Владивосток (423)249-28-31
Владикавказ (8672)28-90-48
Владимир (4922)49-43-18
Волгоград (844)278-03-48
Вологда (8172)26-41-59
Воронеж (473)204-51-73
Екатеринбург (343)384-55-89

Иваново (4932)77-34-06
Ижевск (3412)26-03-58
Иркутск (395)279-98-46
Казань (843)206-01-48
Калининград (4012)72-03-81
Калуга (4842)92-23-67
Кемерово (3842)65-04-62
Киров (8332)68-02-04
Коломна (4966)23-41-49
Кострома (4942)77-07-48
Краснодар (861)203-40-90
Красноярск (391)204-63-61
Курск (4712)77-13-04
Курган (3522)50-90-47
Липецк (4742)52-20-81

Магнитогорск (3519)55-03-13
Москва (495)268-04-70
Мурманск (8152)59-64-93
Набережные Челны (8552)20-53-41
Новокузнецк (3843)20-46-81
Ноябрьск (3496)41-32-12
Новосибирск (383)227-86-73
Омск (3812)21-46-40
Орел (4862)44-53-42
Оренбург (3532)37-68-04
Пенза (8412)22-31-16
Петрозаводск (8142)55-98-37
Псков (8112)59-10-37
Пермь (342)205-81-47

Ростов-на-Дону (863)308-18-15
Рязань (4912)46-61-64
Самара (846)206-03-16
Санкт-Петербург (812)309-46-40
Саратов (845)249-38-78
Севастополь (8692)22-31-93
Саранск (8342)22-96-24
Симферополь (3652)67-13-56
Смоленск (4812)29-41-54
Сочи (862)225-72-31
Ставрополь (8652)20-65-13
Сургут (3462)77-98-35
Сыктывкар (8212)25-95-17
Тамбов (4752)50-40-97
Тверь (4822)63-31-35

Тольятти (8482)63-91-07
Томск (3822)98-41-53
Тула (4872)33-79-87
Тюмень (3452)66-21-18
Ульяновск (8422)24-23-59
Улан-Удэ (3012)59-97-51
Уфа (347)229-48-12
Хабаровск (4212)92-98-04
Чебоксары (8352)28-53-07
Челябинск (351)202-03-61
Череповец (8202)49-02-64
Чита (3022)38-34-83
Якутск (4112)23-90-97
Ярославль (4852)69-52-93

Россия +7(495)268-04-70

Казахстан +7(727)345-47-04

Беларусь +(375)257-127-884

Узбекистан +998(71)205-18-59

Киргизия +996(312)96-26-47

эл.почта: zrj@nt-rt.ru || сайт: <https://z-laser.nt-rt.ru/>